



RGB LED Music Controller

Features:

- Controlled by radio-frequency capacitive touch, effective control distance up to 20 m
- Used convenient at night with LED backlight
- With 3.5MM audio, non-interfered music mode works better.
- Color changing is more exquisite with PWM.
- With Dual channel output, the maximum power is 432W
- Easier to white mode with intelligent switch.
- 20 classic modes changing follow your heart.
- 15 music modes make every moment rhythmical
- Available for all sorts of constant voltage RGB lamps, such as RGB strip, soft strip, RGB panel lights, RGB light modules etc.
- Remote with special fixed seat, convenient for users



- RF 20m effective control
- Touching color chooser
- Intelligent switch
- Wake-up induction
- 20 main modes
- LED backlight
- 15 music modes
- The 3.5MM audio

PN: MUSIC 2

Specifications:

- Input Voltage: DC12V~24V
- Output power: Max 18A
- Volume control: 70dB
- Remote battery: AAA *2
- Remote standby power consumption: 0.08mW
- Remote operating power consumption: 20mW

Applications:

Interior Decoration: club, bar, corridor, room, hotel, museum, etc.

Exterior Decoration: plaza, commercial buildings, parks, scenic spot, evening location, etc.

Instruction of remote buttons:



- ①: ON/ pressing for 3 seconds to switch to white lighting
- ②: OFF
- ③: Color ring
- ④: Brightness control
- ⑤: Speed control
- ⑥: Mode switch
- ⑦ : Music mode switch

Science & technology changes life.

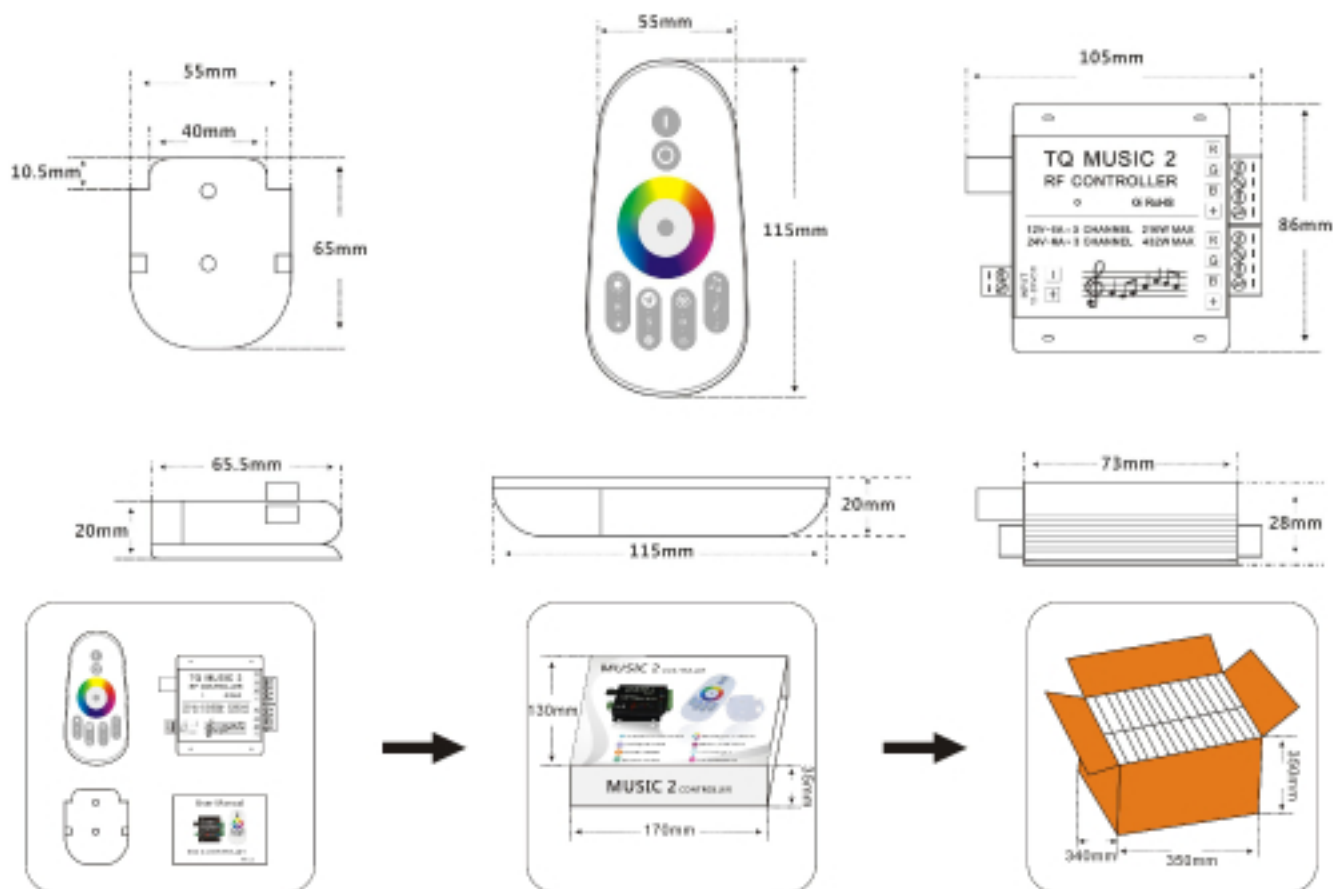
Professional manufacturer of LED products produces every product of international quality attentively.

Controller instruction:




- ①: the volume adjuster
- ②: 3.5mm audio interface
- ③: Input power port
- ④: Audio receiving hole
- ⑤: RGB dual channel output

Product size:



L105*W86*H28 mm	L115*W55*H20mm	L170*W130*H3 5mm	370g	L500*W320*H320 mm	15kg
--------------------	----------------	---------------------	------	----------------------	------

GENERAL MODE			MUSIC MODE			MIC MODE
No.	Mode	Note	No.	Mode	Note	Note
1	Static Mode	Including seven colors	1	Red	Brightness/Speed changing with music	 Mode switching is available in MIC mode
2	Seven Colors Blink	Speed adjustable	2	Green		
3	RGB Gradual		3	Blue		
4	Seven Colors Gradual		4	Purple		
5	Red Blink		5	Orange		
6	Green Blink		6	Cyan		
7	Blue Blink		7	White		
8	Yellow Blink		8	Seven Colors Blink	Color/Brightness/ Speed changing with music	
9	Purple Blink		9	Seven Colors Gradual		
10	Cyan Blink		10	Red Hopping		
11	White Blink		11	Green Hopping		
12	Red/Green Gradual		12	Blue Hopping		
13	Red/Blue Gradual		13	Red/Green Gradual		
14	Green/Blue Gradual		14	Red/Blue Gradual		
			15	Green/Blue Gradual		

Note: Music Mode Works Perfect With Audio Accessed

Install Caution:

- Please let professional person debug and install the products.
- This product is non-waterproof, please avoid the sun and rain. If you install it outdoor, please use the waterproof box.
- Good heat dissipation can prolong the working life of LED controller, please install the product in a well-ventilated place.
- Please don't install or use these products in situations of thunder and lightning, high-intensity magnetic field or high-pressure.
- Please make sure that the output voltage of the LED power supply complies with the voltage range of the product.
- For safety, be sure that the operating current does NOT overload the wire capability.
- Before power on, make sure that ports are connected correctly. Wrong connection will damage the products.

After-sale services:

- Our company offers lifetime technical support and warranty service for our LED controller products.

Free warranty: our company will provide free repair or replacement service if you get the product with quality problems within one year from the date of purchase.

Payout warranty: certain maintenance material will be charged out of free warranty.

- Products which are on the following terms and conditions are out of free warranty

Products damaged by man-made damage like over load, improper operation, High voltage and so on.

Products (non waterproof products) soaked in water or been repaired without permission

Products have serious appearance damage or serious deformation caused by transportation or percussion.

Products damaged by Natural disasters and irresistible reason, such as earthquake, flood, fire, etc.

Application Notes:

